

▶ UAW101S Amplifier

▶ TECHNOLOGY SUMMARY

The Unilase laser amplifier is a high performance, compact unit capable of delivering tens of watts of output power from low power seed lasers.

The mini-slab DPSS design and scalable architecture offers extremely high gain and high average power output with excellent beam quality.

A Unilase amplifier in combination with a pulsed seed laser assures efficient conversion of the amplified beam into green and the UV if required.

▶ APPLICATIONS

Test and Measurement

Higher Throughput Production

Scientific Research

LIDAR

▶ BENEFITS

Amplification of CW and Pulsed (ps-ns) seed lasers

High gain (10^4 - 10^5)

High Peak power handling capability

High polarization purity

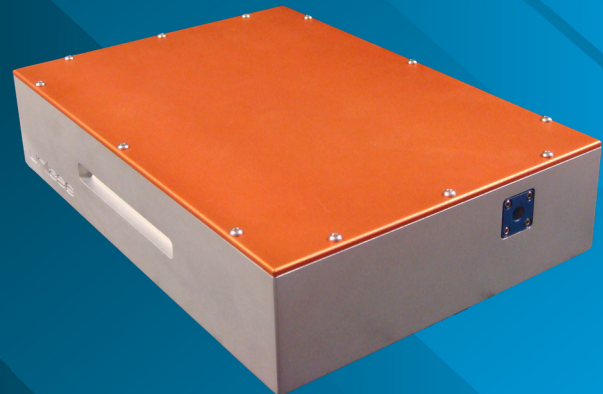
Scalable architecture

▶ FEATURES

Compact Footprint

Robust Mechanical Design

Integrated thermal management

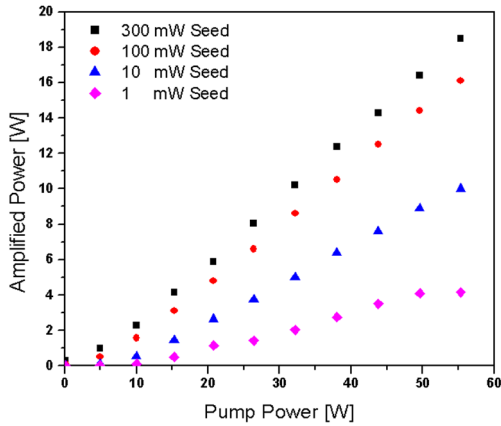


Phone: +44 (0) 20 3176 2589
E-mail: info@unilase.com
Web: <http://unilase.com/>

Unilase Ltd
60 Grays Inn road
Unit LG04
London SW18 4GQ
United Kingdom

▶ Performance Figures

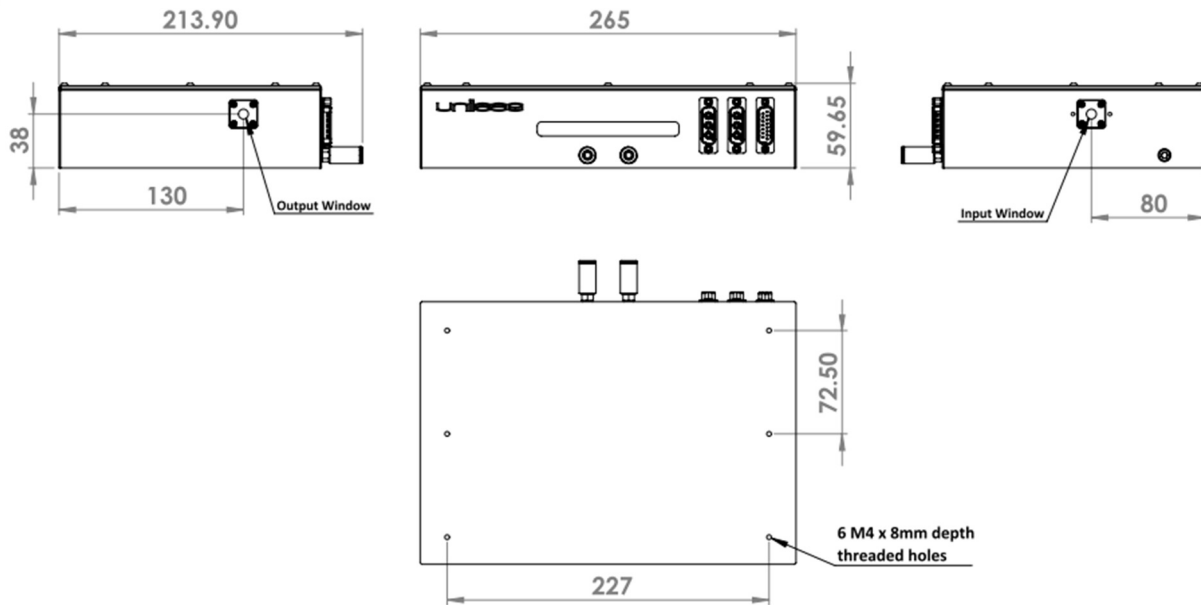
CW AMPLIFICATION



Parameter	Value
Material	Nd:YVO ₄
Wavelength	1064.2 nm
Average Input Seed Power	Amplified Power
300 mW	> 18W
100 mW	> 15W
1.0 mW	> 4W
Spatial Quality	TEM ₀₀ , M ² <1.2
Polarisation	> 100:1 (vertical:horizontal)
Cooling Method	Water
Operating Temperature Range	15-35 DegC

Typical values for CW Nd:YVO₄ seed laser

DIMENSIONS



all dimensions are in mm

Optional Accessories:

1. The amplifier can be supplied with an electronic controller (19" rack, 2U high) to provide currents for diode pump module and thermal management of the unit.
2. Unilase can supply a suitable re-circulating chiller for heat extraction.
3. Air-cooled version of the amplifier can be supplied on request.

Unilase has a policy of continuous product improvements. Specifications are subject to change without notice.

Copyright © Unilase Ltd 2019

Phone: +44 (0) 20 3176 2589
 E-mail: info@unilase.com
 Web: <http://unilase.com/>

Unilase Ltd
 60 Grays Inn road
 Unit LG04
 London SW18 4GQ
 United Kingdom